

## Réunion EMBA Milan, 18/11/2011



Pr Jean-Charles Picaud (Lyon)  
ADLF, Lille 2012

jean-charles.picaud@chu-lyon.fr

## Réunion EMBA, Milan, 18/11/2011

### Agenda

1. Welcome and introductions .....	2
2. Apologies for absence .....	2
3. Annual Report 2010 - 2011 .....	2
4. Finance Report .....	4
5. Membership Report .....	4
6. Elections to Board of Directors (BoD) .....	5
7. Board of Directors election of the new President, Vice President, Secretary, and Treasurer .....	5
8. Membership fees 2012 .....	6
9. EMBA Conference 2012, Lisbon, Portugal .....	7
10. Future conferences and Annual General Meetings .....	8
11. Surveys and audit of milk banks in Europe .....	8
12. Fund Raising .....	9
13. Date & venue next annual general meeting .....	10

jean-charles.picaud@chu-lyon.fr



## Réunion EMBA, Milan, 18/11/2011

### Welcome and introductions

The president, Prof. Guido Moro welcomes all today, and thanks everyone for taking the time to come to the AGM and this important meeting here in Milan. Due to unforeseen circumstances it was not possible to carry out the previously planned conference in Dublin for September 2011. EMBA apologizes for any inconvenience caused by this cancellation.

### Annual Report 2010 - 2011

Guido Moro gives a short summary from October 2010 in Milan, where we saw the legal foundation of EMBA, and the 1<sup>st</sup> Board of Directors (BoD) elected. The Constitution is available on the EMBA website [www.europeanmilkbanking.com](http://www.europeanmilkbanking.com)

Working groups were formed in Milan in November 2010:

1. Fortification
2. Milk Bank Guidelines in Europe
3. Fundraising
4. Heat treatment of Human Milk

jean-charles.picaud@chu-lyon.fr



## Réunion EMBA, Milan, 18/11/2011

### Membership Report

K. Frischknecht presents a short overview of the various member categories.

**Founder Members: 12 (right to vote)**

Individuals who contributed to the establishment and constitution of the Association.

**Milk Bank Members: 16 (right to vote)**

Individuals involved in the activity of European Milk Banks

**Extraordinary Members: 3 (no right to vote)**

Individuals with a professional or personal interest in Human Milk Banking

**Affiliation members: 1 (no voting rights)**

Representative of a national association or group

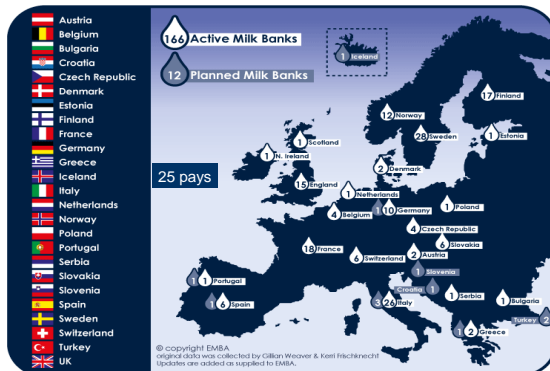
**Total number of members 2011: 32**

**Additional members application for 2012: 9**

jean-charles.picaud@chu-lyon.fr



## EMBA



jean-charles.picaud@chu-lyon.fr



## Réunion EMBA, Milan, 18/11/2011

### Elections to Board of Directors (BoD)

(As stated in the constitution, the BoD will stand down at the end of the first year and the members elect a new BoD comprising 9 Founder or Milk Bank Members and 2 Extraordinary or Honorary Members. Term of office 3 years).

The 11 proposals are:

Guido Moro (Italy)  
Gillian Weaver (UK)  
Kerri Frischknecht (Switzerland)  
Sertac Arslanoglu (Italy/Turkey)  
Clair-Yves Boquien (France)  
Corinna Gebauer (Germany)  
Antoni Gaya (Spain)  
Anne Hagen- Grovslien (Norway)  
Staffan Polberger (Sweden)  
All above are present BoD members. New nominations  
Dr. Andreja Domjan (Slovenia), extraordinary member.  
Assoc. Prof. Enrico Bertino (Italy), milk bank member.

OK

jean-charles.picaud@chu-lyon.fr



## Réunion EMBA, Milan, 18/11/2011

Board of Directors elect the new President, Vice President,  
Secretary, Treasurer and Auditor's Committee

### Bureau actuel:

Président: G Moro  
Vice-présidente: G Weaver,  
Secrétaire: K Frischknecht  
Trésorière: A Arsanoglu

### Nouveau bureau

Présidente: G Weaver  
Vice-présidente: A Arsanoglu  
Secrétaire: K Frischknecht  
Secrétaire adjoint: JC Picaud  
Trésorier: G Moro

jean-charles.picaud@chu-lyon.fr



## EMBA Conference 2012, Lisbon, Portugal



1<sup>st</sup> International Congress of the European Milk Bank Association (EMBA)

### DONOR BREASTMILK

In support of Breastfeeding!

LISBON, 5<sup>th</sup>-6<sup>th</sup> October 2012  
Olisippo Oriente Hotel



Donor Milk: So precious we keep it in a bank!

[www.europeanmilkbanking.com](http://www.europeanmilkbanking.com)

jean-charles.picaud@chu-lyon.fr



## Futures réunions EMBA

- Izmir ?
- Lyon ?

jean-charles.picaud@chu-lyon.fr

